

RESEARCH NEWS

From the Office of Research and Sponsored Programs - Serving the Research Community of Wright State University

Fall 2004 Vol 36 No 1

201J University Hall Telephone 775-2425

WSU Surpasses \$50 Million Dollar Mark in External Grants and Contracts

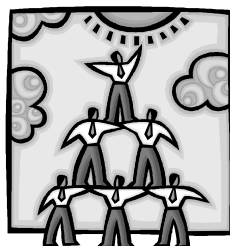
The hard work and determination of the faculty and staff resulted in the university receiving the largest annual recorded total of external funding in WSU's history. The university received 570 awards totaling \$50,462,293 during FY2003-2004. The Office of Research and Sponsored Programs (RSP) would like to congratulate those involved in this effort and to encourage others to do the same. See chart for the breakdown of awards by campus area.

Campus Area	Number of Awards	Amount of Award
School of Medicine	140	\$22,026,742
School of Graduate Studies	13	9,701,371
College of Engineering & Computer Science	110	6,946,390
College of Science & Mathematics	152	5,328,122
Universitywide/Miscellaneous	19	1,471,946
College of Education & Human Services	13	1,376,627
College of Liberal Arts	56	1,280,931
College of Nursing & Health	9	944,916
School of Professional Psychology	34	491,150
Raj Soin College of Business	10	433,121
Student Services	5	324,307
Lake Campus	9	136,670
Total	570	\$50,462,293



For a complete breakdown on amounts, categories, and sources of funding for FY2003-2004, please go to the RSP Annual Report data tables located at: <http://www.wright.edu/rsp/publications.html>.

On behalf of the faculty and staff, Wright State University submitted a total of 797 proposals last year. We at RSP are here to assist you in your pursuit of external



funding and in the proposal submission process. If you have an idea for a project, and would like to turn that idea into a proposal, we invite you to visit our web site at <http://www.wright.edu/rsp> or drop by our office at 201J University Hall to discuss your ideas and ways that our office can help you match your interests with possible funding sources.

Inside This Issue

Notes from the Director	Pg. 2
Invitation	Pg. 2
Research Challenge Awards	Pg. 3
Staff News	Pg. 3
External Awards	Pg. 4
Sponsor Alerts	Pg. 12

Notes From the Director

I was recently reading an interesting article in the *Bulletin of the American Society for Information Science and Technology*.

The article is by Lee Strickland and is titled "Analytic Myopia, Data Disintegration and Homeland Insecurity." Near the end of the piece, Mr. Strickland refers to a suggestion by Dr. Richard Restak (author of *The New Brain*) that "our time of information overload and multitasking is resulting in behaviors in the population that were previously

considered dysfunctional, such as hyperactivity, impulsiveness and easy distractibility, becoming the norm and bringing significant reductions in articulated thought and overall efficiency." Ain't it the truth!

All through the article, Mr. Strickland decried what he referred to as "stove-piped applications" for managing redundant data at different federal intelligence agencies. And I kept thinking about our new Wright Center for Advanced Data Management and Analysis, and what a great *marketing opportunity* all this stove-piping presented to us! So not only does information overload result in impulsiveness, so does information about information overload.

Then I was easily distracted—by information about investigators on campus

who sign material transfer agreements (on their own), receive possibly hazardous substances, and then share them with colleagues in violation of the agreement. Yikes! Don't these investigators realize the liability issues here, not to mention possible security issues? Talk about homeland insecurity! So I impulsively wrote this note, which I hope will distract some researchers out there: don't sign material transfer agreements without having them endorsed by an official of the university (that's me) and don't be sharing the stuff (not even a testing lab) without approval from the provider.

And then at the same time I was reading the article, thinking haphazardly, acting impulsively, and writing this note, there was a knock at the door...

Bill



You're Invited....

The Office of Research and Sponsored Programs (RSP)
invites

new faculty and those just getting started in research
to an

Orientation Seminar

that will introduce the various services available in our office.

**Thursday, October 14, 2004, 9:00 A.M. to 12 Noon in
E156 A & B Student Union**

This seminar will include advice on *locating research funding, WSU internal funding opportunities, proposal administration steps, compliance issues, technology transfer, and administration of external funds.*

We will also demonstrate one of our subscription funding opportunities
databases,

Community of Science or Sponsored Programs Information Network (SPIN)

and information will be provided on how you can be added to RSP's *Faculty Interest Profile database* that we use to match faculty research interests to funding opportunities.

If you plan to attend the seminar, please contact
Jan Power, ext. 2425, by Friday, October 8, 2004.

WSU Research Challenge Awards Announced

The Office of Research and Sponsored Programs is pleased to announce the awardees for the 2003-2004 competition for the Major Collaboration Program. This program, with an



emphasis on collaboration between faculty, is meant to foster submissions of applications to "major" programs. Congratulations to the following awardees:

Samuel A. Lippert
Henry D. Young

College of Engineering and Computer Science
College of Engineering and Computer Science

Center for Orthopaedic Biomechanics \$85,000
A Systems Approach for the Design, \$33,000
Development and Evaluation of 3-D Displays

Find Funding Sources

A hands-on session that will provide an introduction to the electronic resources available to faculty and staff for matching research interests with funding opportunities. The workshop will be held in **403 Millett Hall on November 10, 2004**, from 12-1 P.M.. The focus of this workshop is the electronic databases available on the RSP homepage, which includes:

Community of Science
and
Sponsored Programs; Information Network
(SPIN)



Registration is limited to the first 15 participants so that everyone is assured access to a computer. We ask that those wishing to attend please register by **November 7th**. For additional information or to register, please contact Jackie Frederick by email at jackie.frederick@wright.edu or by telephone at ext. 2664.

Staff News

Awards

Ellen Reinsch Friese, an Associate Director in the Office of Research and Sponsored Programs, recently received the *2004 President's Award for Excellence in Human Relations*.



Those of us who work closely with Ellen are aware of her positive interactions with members of the Wright State community, and now, thanks to the faculty that nominated her, she is being commended for the enthusiasm, harmony, and skills she brings to the university each day. We are proud and happy to see Ellen receive this well-deserved award.

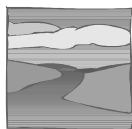
We are also proud that Ellen is the second member of our staff to receive this distinction. In 2000, Dr. Eugene Hern received the *President's Award for Excellence in Service*.

Graduations

Two of RSP's staff members received diplomas at the Spring 2004 Commencement ceremonies. **Robyn James** received a Bachelor of Science in Business, and **Ellen Reinsch Friese** received a Master of Humanities. Congratulations to both of them!



Promotions and Additions



As of August 1, 2004, **Robyn James** was promoted to Institutional Review Board Administrative Coordinator. Her new position involves the management of institutional compliance issues involving human research subjects. Congratulations, Robyn!

Ruth Blum, a temporary account clerk, has been hired to assist with invoicing and award processing in the post-award area of the office. Due to

the amount of time that has been required for some of the RSP staff to be out of the office attending team meetings for the financial portion of the SCT Banner system, we were able to hire Ruth to temporarily help out during this transition period. Welcome, Ruth!

SCT Banner is the new financial/student information system that will be implemented at the university as of July 1, 2005. *As many offices across campus are dealing with this same situation, we hope you understand any slight delays in post-award transactions/communications during this time period.*

A complete listing of the RSP staff with contact information can be found on the RSP web site at <http://www.wright.edu/rsp/pubs/RN/rsp-staff.html>. We welcome your calls and questions.

AWARDS

The grants and contracts on these pages were awarded from May 2004 through August 2004

Ketcha, Daniel M.

CWCS Workshops in Combinatorial Chemistry

Georgia State University
\$14,842

Gallagher, John C.

Collaborative Proposal: CCLI-EMD-A WWW Based Autonomous Robotics Practicum for Engineering Undergraduates and STEM Educators

NSF, Course, Curriculum and Laboratory Improvement
\$168,427

Higgins, Steven R.

Development of "Smart" Scanning Probe Microscopy Instrumentation for Studies of Mineral-Water Interfaces

NSF, Miscellaneous
\$99,358

Fox, Jane Lee

Coronas and Escape from the Martian Atmosphere, Ancient and Modern

NSF, Miscellaneous
\$35,000

Alvarez, Francisco J.

REU Supplement: CAREER - Maturation of Synaptic Properties During Early Postnatal Development

NSF, Research Experiences for Undergraduates
\$8,750

Wooley, Dawn P.

Early Detection of Hemorrhagic Fever Virus Exposure

University of Minnesota
\$30,000

Alvarez, Francisco J.

Development of Synaptic Inputs on Spinal Interneurons

DHHS, National Institute of Neurological Disorders and Stroke (NINDS)
\$298,659

Agrawal, Abinash

Assessing the Impact of Land-Cover Changes on Surface Water Quality in the Upper Mississippi River Sub-Watersheds through Remote Sensing and GIS

Ohio Space Grant Consortium
\$20,043

Martin, Patricia A.

Professional Nurse Traineeship

DHHS, Health Resources and Services Administration
\$67,200

Demerath, Ellen W.

Siervogel, Roger M.

Telomere Length as a Marker of Cardiovascular Aging

DHHS, NIH - Center for Scientific Review
\$71,750

Arlan, Larry G.

Analysis of Enzyme Samples/Dust Stud

Procter & Gamble Company
\$16,000

Glaus, Kathleen D.

Scholarships for Disadvantaged Students Program (SOPP)

DHHS, Health Resources and Services Administration
\$18,742

Siferd, Raymond E.

Array Analog to Digital Converter

Systran Federal Corporation
\$29,999

Praeger, Susan G.

BEACON: Accelerated BSN for Baccalaureate Graduates

DHHS, Health Resources and Services Administration
\$233,953

Helms, Ronald G.

Professional Growth in the Wright Direction

Ohio Department of Education
\$9,478

Mukhopadhyay, Sharmila M.

Performance Enhancement of Second Generation Coated Conductors by Investigation of Flux Pinning and AC Loss Issues

U.S. Department of Energy
\$953,601

Towne, Bradford

Genetic and Environmental Influences on Childhood Growth

DHHS, National Institute of Child Health and Human Development (NICHD)
\$334,346

Basista, Beth A.

Fellows Institutional Change Project

University of Dayton
\$900

The staff of the Office of Research and Sponsored Programs congratulates those receiving external funds, and we encourage those with unfunded proposals to consult with us about resubmission.

Combs, Corinna E.**Agrawal, Abinash**

Assessment of Temporal Changes in Stream Water Quality Due to Lane Use Changes in the Ohio River Watershed During 1980-2000

National Aeronautics and Space Administration
\$24,000

Jones, Thomas Davidson

Miami Valley Regional Planning Commission Market Research Survey 2004

Miami Valley Regional Planning Commission (MVRPC)
\$11,500

Warfield, Janece

CE: Collaborative Peer Supervision Groups (SPRANS)

DHHS, Health Resources and Services Administration
\$30,000

Putnam, Robert W.

AHA-Ohio Valley Affiliate Undergraduate Student (A. Kalra) Summer Research Fellowship

American Heart Association - Ohio Valley Affiliate
\$3,000

Gilkey, Robert H.

Use of Auditory Displays

General Dynamics (formerly Veridian Engineering)
\$104,795

Dockery, Jane L.

Yellow Springs Cost of Living: Reflecting on the Past, Planning for the Future

Yellow Springs Men's Group
\$6,466

Blair, John**Larsen, James E.**

The Impact of Growth Management Policies on Retail Development

ICSC Educational Foundation
\$12,700

Grandhi, Ramana V.

Adaptive Structures - Based on Energy Design (ASBED)

Anteon Corporation
\$90,000

Organisciak, Daniel T.

Photoreceptor Cell Survival: Efficacy of Drug Treatments

Alcon Laboratories, Inc.
\$80,300

Carlson, Robert G.**Siegal, Harvey A.**

MDMA/Club Drug Use and STD/HIV Sex Risk Behavior in Ohio

DHHS, National Institute on Drug Abuse (NIDA)
\$588,659

Winfrey, LaPearl

Pre-Doctoral Training

Children's Medical Center (Dayton)
\$16,000

Winfrey, LaPearl

Pre-Doctoral Training

Miami Valley Hospital
\$8,000

Winfrey, LaPearl

Pre-Doctoral Training

South Community Mental Health Center
\$24,000

Martin, Patricia A.

Nursing Institute of West Central Ohio

U.S. Department of Education
\$198,820

Gallimore, Jennie J.

Rolling Lead Aircraft Illusion Experiment

SDS International, Inc.
\$25,001

Brandeberry, James E.**Thomas, Jr., Joseph F.****Bourbakis, Nikolaos G.**

Information Technology Research Insti

U.S. Department of Education
\$248,575

Gilpin, Roger K.

Measurement of Non-Point Toxic Pollutants

City of Honolulu, HI
\$3,496

Parent, Kay R.

Community Health Assessment

Hamilton County General Health District
\$33,040

Stern, Javier E.

Hypothalamic Role in Hypertension

DHHS, National Heart, Lung, and Blood Institute (NHLBI)
\$250,250

Narayanan, Sundaram

Personal Knowledge Base

LexisNexis
\$12,382

Cool, David R.

Vasopressin Cytotoxicity in Inherited Diabetes Insipidus

DHHS, National Institute of Diabetes and Digestive and Kidney Diseases (NIDDK)
\$243,100

Siegal, Harvey A.**Rapp, Richard C.**

Reducing Barriers to Drug Abuse Treatment Services

DHHS, National Institute on Drug Abuse (NIDA)
\$812,404

Narayanan, Sundaram**Fendley, Ryan D.****Golshani, Forouzan****Premus, Robert**

Wright State University Certificate Program Focusing on Innovation and Entrepreneurship for High Technology

Coleman Foundation, Inc.
\$20,000

<p>Hunt, Allen G. <i>Charge Carriers in Frequency-Dependent Electrical Conductivity of Smectites</i> U.S. Department of Agriculture \$15,000</p>	<p>Gilpin, Roger K. Gilpin, Christina R. <i>Analysis of N-Nitrosoglyphosate in Commercial Samples of Glyphosate</i> ATANOR \$10,965</p>	<p>Reo, Nicholas V. <i>Toxicant Classification by NMR-Based Metabonomics</i> ManTech Environmental Technology, Inc. \$16,106</p>
<p>Warfield, Janece <i>PECE-PACT: Parents Early Childhood Education/Positive Action Choices Training</i> Montgomery County ADAMH Services Board \$69,287</p>	<p>Bernstein, Jack M. <i>Treatment of Clostridium Associated Diarrhea</i> Genome Therapeutics Corporation \$2,000</p>	<p>Premus, Robert Blair, John Gulas, Charles S <i>Wright Air and Space Center: A Site Location Study Proposal</i> Wright Air and Space Center \$25,000</p>
<p>Alvarez-Leefmans, F. Javier Olson, James E. <i>Cell Volume Regulation in Neurons and Glia</i> DHHS, National Institute of Neurological Disorders and Stroke (NINDS) \$305,663</p>	<p>Urban, Maria D. <i>Diabetes Treatment</i> Novo Nordisk Pharmaceuticals, Inc. \$8,249</p>	<p>Winfrey, LaPearl <i>Practicum Training - Professional Psychology Brief Therapy Program</i> South Community Mental Health Center \$12,000</p>
<p>Parent, Kay R. <i>Development of the Ohio Maternal and Child Health (MCH) Block Grant Needs Assessment Report</i> Ohio Department of Health \$13,636</p>	<p>Turchi, John J. Patrick, Steve M. <i>Recognition and Repair of Cisplatin-DNA Damage</i> DHHS, National Cancer Institute (NCI) \$193,050</p>	<p>Winfrey, LaPearl <i>Practicum Training</i> South Community Mental Health Center \$12,000</p>
<p>Shalin, Valerie L. <i>Communication Processes in Organizational Risk Management</i> National Aeronautics and Space Administration \$73,219</p>	<p>Garber, Fred D. <i>Receiver and Processing Concepts Evaluation (RAPCEval)</i> DoD, Air Force, Air Force Research Laboratory \$112,010</p>	<p>Winfrey, LaPearl <i>Practicum Training</i> Bonds, Mathis & Associates \$6,000</p>
<p>Gallimore, Jennie J. <i>Development of Specifications for an Interactive Aircraft Accident Data Collection and Analysis System</i> U.S. Department of Transportation, Federal Aviation Administration \$53,550</p>	<p>Arlan, Larry G. <i>Mite Studies</i> S.C. Johnson Wax \$30,000</p>	<p>Winfrey, LaPearl <i>Practicum Training</i> Central Clinic \$8,000</p>
<p>Cortes, Tess <i>General Operating Support - Art Galleries</i> Ohio Arts Council \$3,787</p>	<p>Schisler, Cindy Kennedy, Sandra D. <i>Wright State/Southwestern Ohio Labor-Management Working Network Council</i> Ohio Department of Development \$54,000</p>	<p>Winfrey, LaPearl <i>Practicum Training</i> University of Dayton \$11,000</p>
	<p>Kennedy, Sandra D. <i>Wright State University Kettering Center for Continuing Education's Labor Management Initiative</i> Ohio Department of Development \$60,000</p>	<p>Winfrey, LaPearl <i>Practicum Training</i> Trotwood-Madison Schools \$30,000</p>
		<p>Winfrey, LaPearl <i>Practicum Training</i> Shelby County Counseling Center \$6,000</p>

Winfrey, LaPearl <i>Practicum Training</i> Pain Care Institute \$6,000	Kennedy, Sandra D. <i>Staff Administrative Support Team (SAST) Annual Seminar</i> Veterans Affairs Medical Center \$2,250	Morris, Mariana Elased, Khalid M. <i>Role of Angiotensin Receptors in Central Osmosensitivity (Minority Supplement)</i> DHHS, National Heart, Lung, and Blood Institute (NHLBI) \$121,975
Winfrey, LaPearl <i>Practicum Training</i> Dettmer Hospital \$6,000	Kennedy, Sandra D. <i>Skills to Get Organized and Manage Your Time</i> Veterans Affairs Medical Center \$1,600	Moore, Dennis C. <i>Adapting Prevention Education for Youth with Disabilities</i> Ohio Department of Alcohol & Drug Addiction Services \$73,000
Winfrey, LaPearl <i>Practicum Training</i> Greene Memorial Hospital \$6,000	Kennedy, Sandra D. <i>Developing Professional Presentation Skills</i> Kodak Versamark, Inc. (formerly Scitex Digital Printing) \$4,500	Heminger, Katherine A. Berberich, Steven J. <i>MdmX Affects on Tumor Cell Expressi</i> Sigma XI \$400
Winfrey, LaPearl <i>Practicum Training</i> Employee Care of MVH/Good Samaritan Hospital \$24,000	Lauf, Peter K. <i>Proteomics of M-L Antigens Modulating Cation Transport</i> DHHS, National Institute of Diabetes and Digestive and Kidney Diseases (NIDDK) \$143,000	Winfrey, LaPearl <i>Pre-Doctoral Training</i> Twin Valley Psychiatric System \$8,000
Winfrey, LaPearl <i>Practicum Training</i> Dayton Urban League \$12,000	McLellan, Marjorie L. <i>Preble County Historical Society Internship</i> Preble County Historical Society \$7,500	Winfrey, LaPearl <i>Practicum Training</i> Twin Valley Psychiatric System \$6,000
Winfrey, LaPearl <i>Practicum Training</i> Darke County Mental Health Center \$6,000	Jones, Thomas Davidson <i>Greater Dayton Regional Transit Authority Regional Hubs Job Market Survey Study</i> Greater Dayton Regional Transit Authority \$3,500	Morgan, Sherri Lynn <i>Looking for Leadership: An Assessment of the Leadership Gap in Minority Populations within Ohio's Public Health Agencies</i> Ohio Commission on Minority Health \$43,748
Winfrey, LaPearl <i>Practicum Training</i> Consumer Advocacy Model Program \$12,000	Morris, Mariana Stern, Javier E. <i>Role of Angiotensin Receptors in Central Osmosensitivity</i> DHHS, National Heart, Lung, and Blood Institute (NHLBI) \$321,750	Rizki, Mateen M. Tamburino, Louis A. <i>Hybrid Evolutionary Learning for Pattern Recognition Contract (HELPR) to Extended Operating Conditions</i> DoD, Air Force, Air Force Research Laboratory \$50,000
Winfrey, LaPearl <i>Practicum Training</i> Children's Hospital Medical Center (Cincinnati) \$3,000		
Winfrey, LaPearl <i>Practicum Training</i> Summit Academy \$12,000		

Morris, Mariana*Analyses of Oxytocin in Various Tissue Sample*

Debra K. Bello

\$8,000

Siferd, Raymond E.*Reconfigurable Architectures for Mobile Joint Tactical Radio Systems (JTRS) for UAVs*

University of Dayton

\$34,000

Arose, Lisa H.*Child and Family Health Services (CFHS) Focus Groups and Health Needs Assessment*

Greene County Combined Health District

\$2,000

Menart, James A.**Shang, Joseph J.S.***Plasma Modeling Program*

Universal Technology Corporation

\$21,366

Schlagheck, Donna M.*Kettering Foundation Internship*

C.F. Kettering Foundation

\$64,468

Arose, Lisa H.**Jones, Thomas Davidson***Clean Indoor Air Study*

Greene County Family and Children Services

\$10,350

Bennett, Kevin B.*Representing Plan Execution in a Dynamic Battlefield Environment*

Micro Analysis and Design, Inc.

\$16,249

Menart, James A.*Computer Modeling of the Discharge Chamber of an Ion Engine*

National Aeronautics and Space Administration

\$52,594

Rigling, Brian D.*Synthetic Aperture Radar for Tactical Imaging (SALTI) System Engineering Support*

Northrop Grumman Corporation

\$59,599

Siegal, Harvey A.**Carlson, Robert G.***Ohio Substance Abuse Monitoring Network*

Ohio Department of Alcohol & Drug Addiction Services

\$316,947

Grandhi, Ramana V.*Nonlinear Analysis of Advanced Composites in a Thermal/Acoustic Environment*

Anteon Corporation

\$109,000

Grasman, Keith A.*Assessment of Pollutants and Health Effects in Wild and Captive Birds*

Canadian Wildlife Service

\$3,600

Demerath, Ellen W.**Czerwinski, Stefan Aleksander****Siervogel, Roger M.****Towne, Bradford***Visceral Adiposity: Genetic and Environmental Influences*

DHHS, National Institute of Diabetes and Digestive and Kidney Diseases (NIDDK)

\$314,863

Sanville, Thomas J.*Statewide Core Electronic Information Collection (SCEIC)*

State Library of Ohio

\$600,000

Sanville, Thomas J.*Statewide Core Electronic Information Collection (SCEIC)*

State Library of Ohio

\$376,499

Putnam, Robert W.**Dean, Jay B.***Intracellular pH Responses of Central Chemoreceptors*

DHHS, National Heart, Lung, and Blood Institute (NHLBI)

\$243,100

Greenberg, Marc S.**Burton, G. Allen***Intergovernmental Personnel Agreement - Greenberg*

U.S. Environmental Protection Agency

\$197,177

Goshtasby, A. Ardeshir*Surgical Robot Assistant*

Kettering Medical Center

\$36,000

Doll, Valerie*Regional Articulation Pathways in Education*

Ohio Board of Regents

\$5,000

Higgins, Steven R.*Surface Analysis 04/PNW AVS Conference Travel*

Pacific Northwest National Laboratory

\$1,300

Clasen, Mark E.*Consulting Services - MCDJFS*

Montgomery County Department of Job and Family Services

\$40,800

Carmichael, Wayne W.*Analysis of Water Samples for Cyanobacteria Neurotoxins*

State of Nebraska

\$0

Siegal, Harvey A.	Lieh, Jungshen	Towne, Bradford
Carlson, Robert G.	<i>Advanced Control System for Manufacturing Processes - Phase IV: Precision Machining Process Development and Optimization</i>	Demerath, Ellen W.
Falck, Russel S.	Delphi Chassis Systems	Siervogel, Roger M.
Wang, Jichuan	\$78,000	<i>Genetic Regulation of Adiposity and Associated CVD Risks</i>
<i>Crack Cocaine and Health Services Use in Rural Ohio</i>	Harbort, Janet McLendon	DHHS, National Institute of Diabetes and Digestive and Kidney Diseases (NIDDK)
DHHS, National Institute on Drug Abuse (NIDA)	<i>Institute on Writing and Teaching</i>	\$543,105
\$590,112	Ohio Board of Regents	Baumhauer, Carol A.
Look, David C.	\$45,000	<i>Manufacturing Small Business Development Center (M-SBDC)</i>
<i>Materials for High Speed Devices</i>	Alter, Sherman J.	Ohio Business Connection
DoD, Air Force, Air Force Research Laboratory	<i>Safety and Effectiveness of a New Rotavirus Vaccine</i>	\$46,564
\$312,740	Merck & Co., Inc.	Ramsey, Rosemary P.
Flach, John M.	\$8,120	<i>Manufacturing Small Business Development Center</i>
<i>Cognitive Systems Engineering: Toward an Integrated Constraint Evaluation System for Ecological Work Design</i>	Paul, Cassandra C.	Edison Materials Technology Center (EMTEC)
General Dynamics (formerly Veridian Engineering)	Baumann, Michael A.	\$3,233
\$36,320	<i>License Agreement for AML14 and AML14.3D10 Cell Lines</i>	Schisler, Cindy
Remsberg, Karen E.	Pfizer, Inc.	<i>Ohio Labor Management Cooperation</i>
Siervogel, Roger M.	\$20,000	More Than One Source of Support
<i>Early Life Antecedents of Adult Chronic Disease</i>	Hangartner, Thomas N.	\$259
DHHS, National Institute of Diabetes and Digestive and Kidney Diseases (NIDDK)	<i>Postmenopausal Evaluation and Risk Reduction</i>	Hooker, Carol M.
\$48,928	Pfizer, Inc.	<i>Traffic Stop Profile Mapping</i>
Schumm, Gregory F.	\$8,153	Law Office of the Public Defender, Montgomery County
<i>Targeted Training Grant - Cooper Farms</i>	Drehmer, Timothy J.	\$3,577
Lorain County Community College	Hangartner, Thomas N.	Wagner, Michael D.
\$3,390	<i>A Novel Treatment for Rheumatoid Arthritis</i>	Fausch, Scott A.
Jones, Thomas Davidson	Merck & Co., Inc.	<i>Uniform Commutation Allowance</i>
<i>Park Master Plan Survey</i>	\$3,090	DoD, Air Force, AFROTC
City of Kettering, Ohio	Klein, Helen A.	\$1,489
\$3,450	<i>Rosetta Support</i>	Dunn, Margaret M.
Cauley, Katherine L.	Ball Aerospace	<i>DCOP Fiscal Agency Renewal (06/04 - 05/09)</i>
<i>Kinship Navigator Consortium</i>	\$86,262	Dayton Clinical Oncology Program (DCOP)
Montgomery County Children Services	Dockery, Jane L.	\$775,458
\$95,905	<i>Tooling and Machining Industry Change</i>	Grandhi, Ramana V.
	Cleveland State University	<i>Simulation Based Research and Development Tools and Processes</i>
	\$20,000	University of Dayton
		\$160,000

Kozowski, Gregory*Electrochemical Deposition of Ni Textured Layer with Nano-size Grains on Metallic Rods*AT&T Government Solutions, Inc.
\$37,000**Curry-Jackson, Anita E.***Grand Lake/Mercer County Project*Grand Lake/Mercer County Research, Inc.
\$5,061**Hangartner, Thomas N.***Evaluation of a Novel Treatment in Patients with Osteogenesis Imperfecta*Procter & Gamble Company
\$0**McLellan, Marjorie L.***Sinclair Community College Archives Graduate Assistant*Sinclair Community College
\$7,000**Dockery, Jane L.***City of Piqua Strategic Planning Process*City of Piqua, Ohio
\$900**Fox, Jane Lee***Studies of the Mars Global Surveyor Radio Science Electron Density Profiles*National Aeronautics and Space Administration
\$70,894**Dustin, Jack L.***2000 Baseline Data Collection for Hope VI*University of Dayton
\$5,000**Arose, Lisa H.***Partnerships for Success*Greene County Family and Children Services
\$52,673**Arlan, Larry G.***House Dust Mite Purity Analysis*More Than One Source of Support
\$7,800**Brown, Thomas L.***Material Transfer Agreement for Evaluation of a Diagnostic Indicator - TOSOH Corporation*More Than One Source of Support
\$5,000**Wolf, J. Mitch***Thermal Management Simulation Capability Assessment*Universal Technology Corporation
\$20,000**Thomas, Scott Keith***Thermal Management of Next-Generation Power Electronics for the More-Electric Aircraft Initiative*Universal Technology Corporation
\$20,000**Anstadt, Mark P.****Brown, Thomas L.***Cardiac Ventricular Assist Study*MYOTECH, LLC
\$450,000**Martin, Patricia A.***Miami Valley Hospital Operating Agreement*Miami Valley Hospital
\$45,000**Wheatly, Michele G.****Mawasha, P. Ruby***LSAMP Bridge Program*Ohio State University
\$22,200**Bonnet, Michael H.***Obstructive Sleep Apnea/Hypopnea Syndrome*Cephalon, Inc.
\$24,660**Gilpin, Roger K.***Evaluation of Commercial Processes*Solutia, Inc.
\$17,300**Dodge, Robin E.***Aerospace Medicine Residency Program*National Aeronautics and Space Administration
\$600,000**Gentile, Julie P.***MRDD Residency/Traineeship Training*Ohio Department of Mental Health
\$30,000**Lefkowitz, I. Michael***DNA Replication Fork: Pausing, Recombination and Disease*Children's Hospital Research Foundation
\$100,924**Wolf, J. Mitch***Precision Design*DoD, Air Force, Air Force Research Laboratory
\$30,000**Walsh, Charles***Wright Center of Innovation - Corporate Matching Funds Account*More Than One Source of Support
\$15,000**Grasman, Keith A.***Immunological Methods for the Characterization of the Reproductive Toxicity of Depleted Uranium in Rats*DoD, Air Force, Air Force Research Laboratory
\$42,905**Lieh, Junghsen***Impact tests of Undamaged and Damaged Materials*BlazeTech Corporation
\$40,000**McLellan, Marjorie L.***University of Dayton Roesch Library Archives Public History Internship*University of Dayton
\$8,200

Geyer, Robert R.	Carmichael, Wayne W.	Carmichael, Wayne W.
Prochaska, Lawrence J.	<i>Criteria for Quality Control Protocols for Various Algal Toxin Methods</i>	<i>Characterization of Cyanobacteria Secondary Metabolites</i>
<i>Investigating the Role of Interhelical Hydrogen Bonds in Subunit III of Cytochrome c Oxidase</i>	Cooperative Research Centre for Water Quality and Treatment (Australia)	More Than One Source of Support
American Heart Association - Ohio Valley Affiliate	\$56,958	\$23,573
\$18,000	Sylvester, Roger	Gilpin, Roger K.
Pohlman, Roberta L.	<i>Insurance Lesson Plans</i>	Rukunda, Farai
<i>Center for Health Promotion: MVH Wellness Center</i>	Ohio Insurance Institute	<i>State of Ohio Sludge Program</i>
Miami Valley Hospital	\$1,000	More Than One Source of Support
\$13,156	Cauley, Katherine L.	\$17,250
Binder, Stephen Bruce	<i>AHEC Support</i>	
<i>Predoctoral Training in Primary Care</i>	Ohio Board of Regents	
DHHS, Health Resources and Services Administration	\$86,807	
\$133,673	Sanville, Thomas J.	
Reece, Robert	<i>OhioLINK</i>	
<i>Reach Out of Montgomery County</i>	Ohio Board of Regents	
Reach Out of Montgomery County	\$3,338,486	
\$80,000	Thomas, Jr., Joseph F.	
Brun, Carl F.	<i>Ohio's Research Challenge - "03-05" Biennium</i>	
<i>Child Welfare Workforce Professional Education Program</i>	Ohio Board of Regents	
Ohio Department of Job and Family Services	\$357,271	
\$15,921	Dustin, Jack L.	
Schumm, Gregory F.	<i>Urban Projects - Urban Universities Linkage</i>	
<i>Targeted Training Grant - A.A.P. St. Mary's Corporation</i>	Ohio Board of Regents	
Lorain County Community College	\$85,613	
\$24,308	Bourbakis, Nikolaos G.	
Hooker, Carol M.	Brandeberry, James E.	
<i>Harrison Township Employment Study</i>	<i>Priorities in Graduate Education</i>	
Harrison Township, Ohio	Ohio Board of Regents	
\$1,460	\$114,731	
Winfrey, LaPearl	Golshani, Forouzan	
<i>SOPP Student Practicum Training</i>	<i>Priorities in Graduate Education (Computer Science)</i>	
Montgomery County ADAMH Services Board	Ohio Board of Regents	
\$42,000	\$159,981	
	Look, David C.	
	<i>Hall Effect Measurements</i>	
	More Than One Source of Support	
	\$6,700	

RESEARCH NEWS

Office of Research and
Sponsored Programs
Wright State University
201J University Hall
Dayton, Ohio 45435
Voice: 937 775-2425
FAX: 937 775-3781
email: rsp@wright.edu
<http://www.wright.edu/rsp/>

Upcoming Call for Proposals



During the fall quarter, a call for proposals for the **Research Challenge Early Start/Augmentation** program will be issued. This program is intended to provide funding to support and improve the effectiveness of basic or applied research projects supported by external sponsors. Augmentation may also include support for pursuit of promising related new directions for an existing project. In this case, the intent would be to strengthen related or follow-up proposals.

All fully-affiliated faculty who have submitted a *competitive* proposal through WSU's Office of Research and Sponsored Programs to an external agency

- for basic or applied research
- between October 1, 2003 and September 30, 2004
- with a total first year proposed or awarded budget (sponsor portion) of at least \$40,000
- on which the faculty member is listed as an investigator

are eligible to submit a proposal for the Early Start/Augmentation Research Challenge Program.

Letters will be distributed to eligible faculty during fall quarter inviting them to submit a proposal. Complete guidelines and application information are located on the RSP web site at <http://www.wright.edu/rsp/internal.html>.

Sponsor Alerts

National Science Foundation (NSF)

The National Science Foundation has published a revision to the NSF Grant Proposal Guide (GPG) (NSF 04-23) that is effective for proposals submitted on or after September 1, 2004. The revision incorporates the following changes into the guide:



- Descriptions of the various categories of funding opportunities utilized by NSF to generate proposals, as well as the scenarios in which each are used.

- New explicatory information on the types of submissions that may be required under NSF program solicitations, as well as the rationale for their use.
- Enhanced capabilities in FastLane for submission of proposal file updates.

The complete guide, including a summary of significant changes, can be found at <http://www.nsf.gov/pubsys/ods/getpub.cfm?gpg>.

RSP Staff

Director

William K. Sellers, Ph.D william.sellers@wright.edu

Senior Associate Director

Eugene Hern, Ph.D eugene.hern@wright.edu

Associate Directors

Ellen Reinsch Friese ellen.friese@wright.edu

Glen Jones glen.jones@wright.edu

Associate Director for Technology Transfer

Isabelle Gorrillot isabelle.gorrillot@wright.edu

Assistant Director

Jackie A. Frederick jackie.frederick@wright.edu

Senior Grants Management Specialist

Marianne Shreck marianne.shreck@wright.edu

Grants Accountant

Sheri Coyle sheri.coyle@wright.edu

Administrative Coordinator (IRB)

Robyn James robyn.james@wright.edu

Programs Facilitators

Cheryl Nickoson cheryl.nickoson@wright.edu

Jan Power rsp@wright.edu

Christine Piekkola christine.piekkola@wright.edu

Grants and Contract Specialist

Bonnie Hebert bonnie.hebert@wright.edu

Temporary Assistant, Post Award

Ruth Blum ruth.blum@wright.edu

Undergraduate Assistants

Samar Babar

Jana Turner

Tiffany Seiter

Julie Seger